

How to enable SMS-200 to the Gigabit Ethernet support

1. Hardware

A. Disassemble the front case

- i. Unscrew 4points of Torx screws as like the image below.



B. Disassemble the LED board

- i. Unscrew the black screw and separate the LED board from the front case.



C. Disassemble the rear case

- i. Unscrew 4points of Torx screws as like the image below.



D. Remove 'C670' Chip Capacitor

- i. Pull out the rear case very carefully to disassemble the main board from the body case.
 1. Remove 'C670' by a soldering machine.
(If required, the power board can be disassembled.)



E. Assemble SMS-200 cases

- i. Repeat to assemble SMS-200 cases in the reverse order.

2. Change the micro SD card image

A. Preparation

- i. Download the new micro SD card image in the link below. Please be noted the image file is quite big(7.4GB BIN file)

<https://drive.google.com/open?id=0B8NxBL8eTX11bFc3ZndpUS1Mc1k>

- ii. Download the imageUSB exe file in the link and unzip.

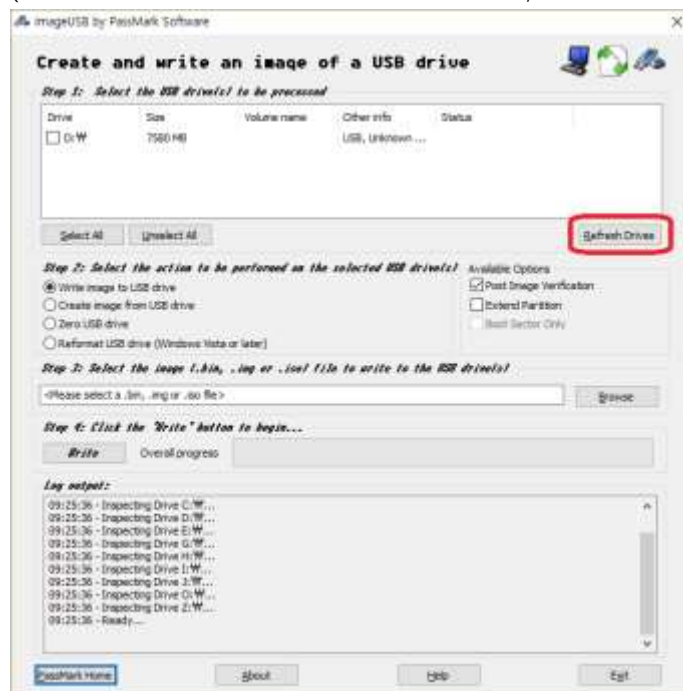
<http://www.osforensics.com/downloads/imageusb.zip>

- iii. Take out the micro SD card from the rear case of SMS-200 and insert to the USB port by using the micro SD card reader.

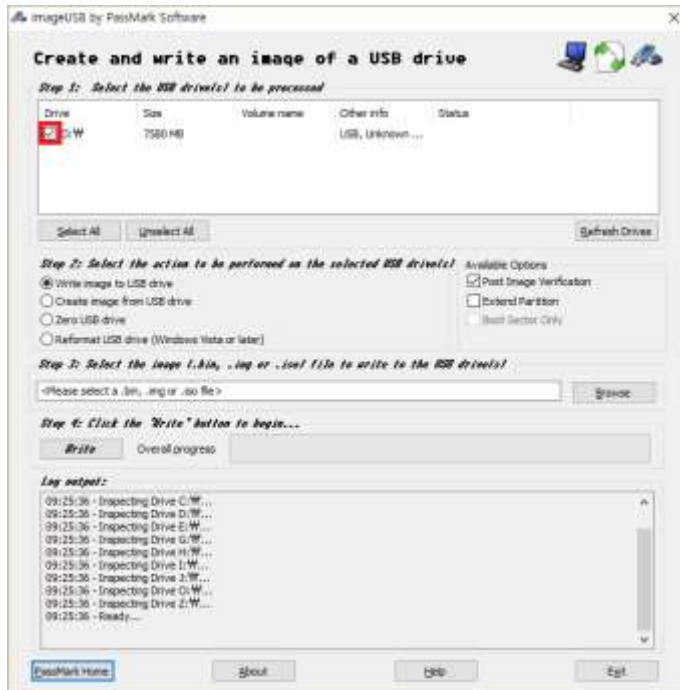
B. Run imageUSB

- i. Run imageUSB. The connected USB device will be shown up.

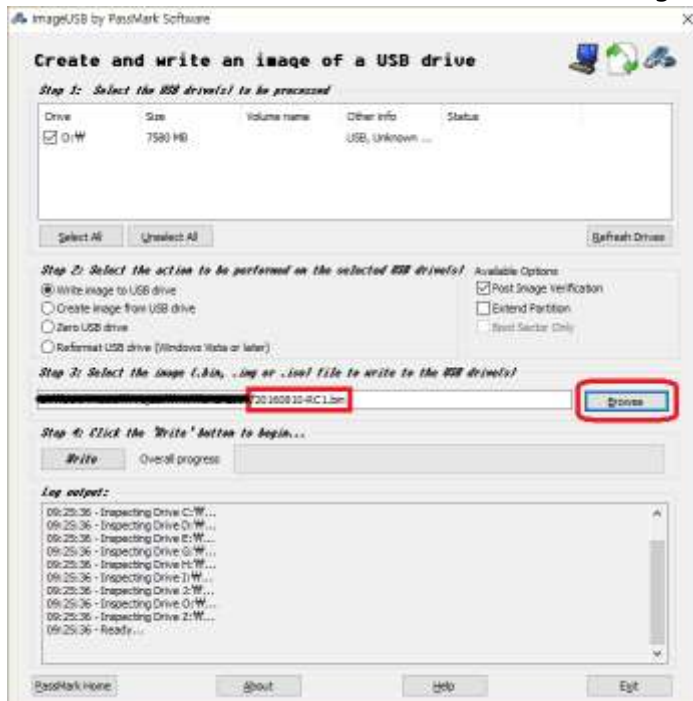
(If the connected USB device is not shown, click 'Refresh Drives'.)



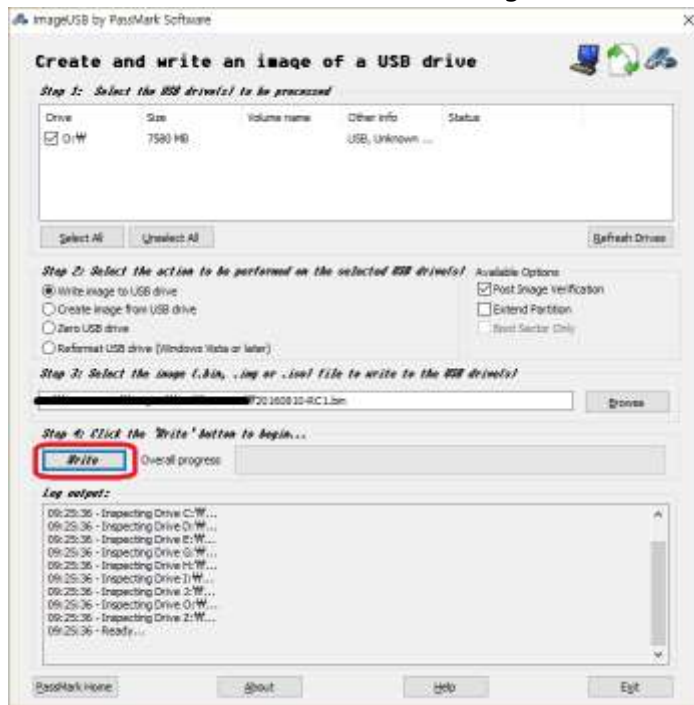
- C. Select an USB device
 - i. Select an USB device to write the new image file.



- D. Select the new image file
 - i. Click 'Browse' button and select the downloaded image file (20160830-RC2.bin).



- E. Write the new image
 - i. Click 'Write' button to write the new image file to the micro SD card.



3. Finish

- A. Insert the micro SD card to the rear panel of SMS-200 again.
- B. Power on SMS-200, and apply the latest software upgrade in Eunhasu animated GUI settings.