

How to connect SMS-1000 to sDP-1000 to playback DSD

1. Preparation

A. Connect SMS-1000 to sDP-1000

- i. SMS-1000 doesn't support DSD playback through SMS-1000's built-in DAC or Digital Output features. DSD play is available through SMS-1000's USB Output.
- ii. Please connect SMS-1000 to sDP-1000 by **USB cable** to playback DSD files.

B. Connect SMS-1000 to other brand DACs

- i. Please connect SMS-1000 to the other brand DACs through **USB output**.

Be noted, the DAC should support DSD play.

1) Once the DAC is connected by USB cable to SMS-1000, the USB DAC will be shown on ALSA device list.

2) Please look over 'C' step to enable this DAC.

3) You can select and play DSD files.

C. Enable the 'USB Audio output' on SMS-1000

- i. In case of SMS-1000d, only Digital output(AES/EBU, Coaxial, Optical) is enabled as a standard mode when the unit is released from the factory, USB audio output should be enabled to playback DSD files.

In case of SMS-1000a, only Analog output(Balance, Unbalance) is enabled as a standard mode when the unit is released from the factory, USB audio output should be enabled to playback DSD files.

In case of SMS-1000u, only USB Audio output is available, you can omit this step.

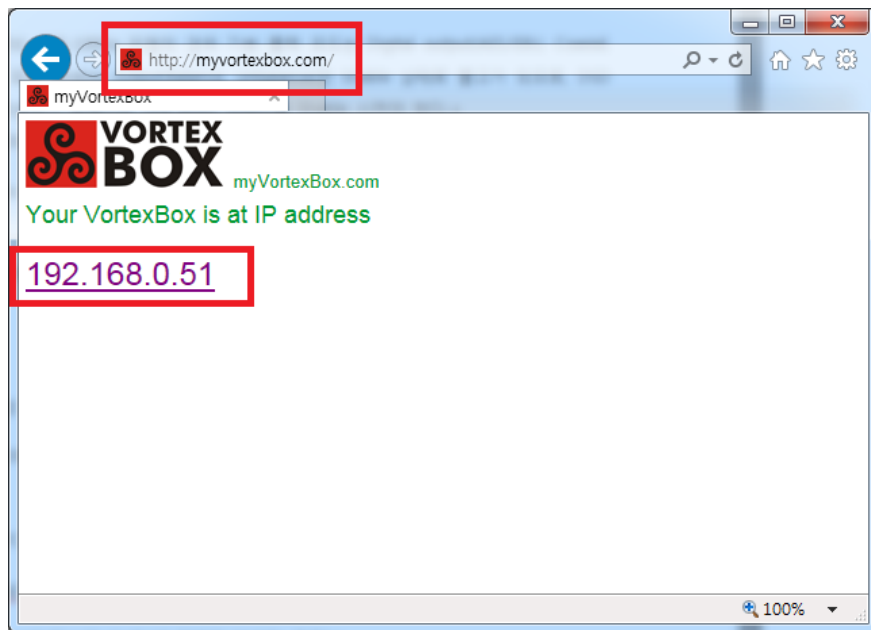
- ii. How to enable USB Audio Output

1. Please enter '**http:// vortexbox/**' on web browser to access 'SMS-1000 web GUI'.

1) If the connection is failed under <http://vortexbox/>, please enter '**http://myvortexbox.com**' on web browser, and the **IP address of your SMS-1000** will be shown. Please click this IP address to access '**sMS-1000 web GUI**.'

2) If you already know the IP address of your SMS-1000, you can directly enter them on

web browser.



2. Please click the 'Configure VortexBox Player' icon on the bottom left of the page.

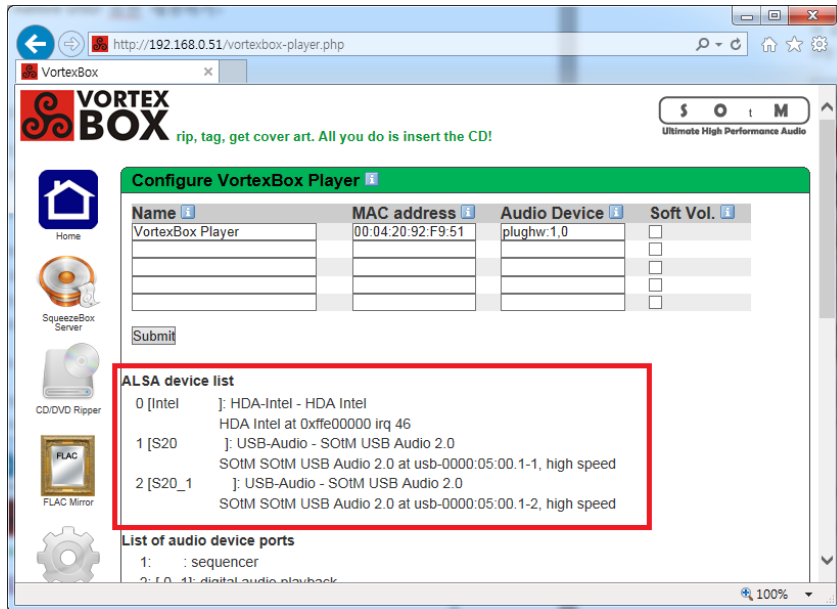


3. If the connections between sDP-1000 and SMS-1000d or SMS-1000a are correct, there are 3 ALSA devices shown on ALSA device list as the below image.

0: Main B/D Audio of SMS-1000

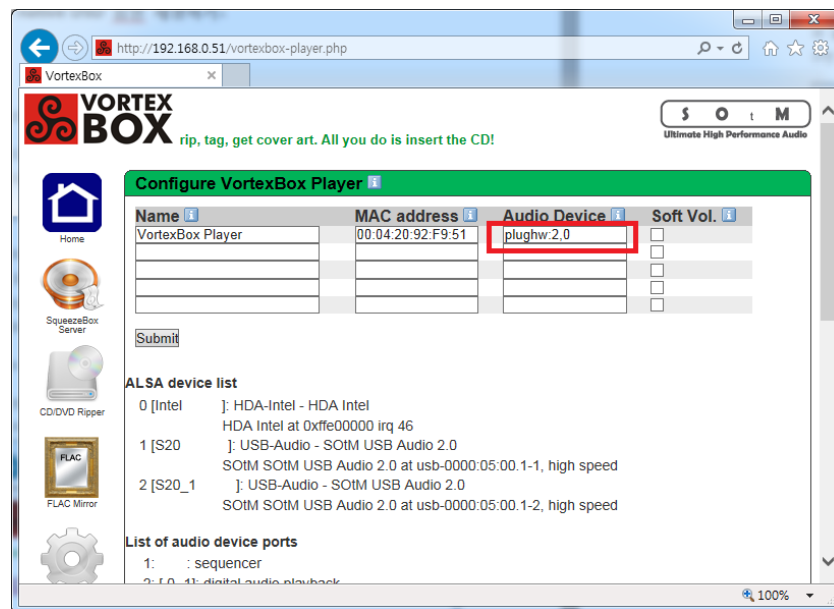
1: Digital for Analog output

2: sDP-1000 (or other brand DACs)



4. Please configure the audio output device to ' **plughw:2,0** ' as like the below image.

Be noted, **uppercase & lowercase letters and marks** when setting the Audio Device.



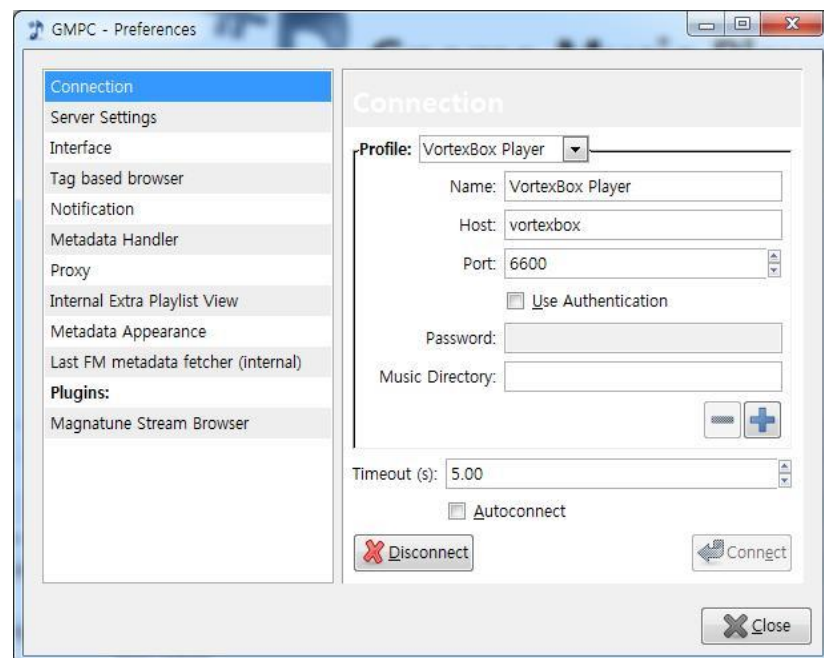
→ Tip1. If you set the Audio Device to 'plughw:1,0 plughw:2,0', the ALSA device 1 and 2 will be enabled.

→ Tip2. In case of SMS-1000u, ALSA device 1 is the sDP-1000, so the Audio Device should be 'plughw:1,0'.

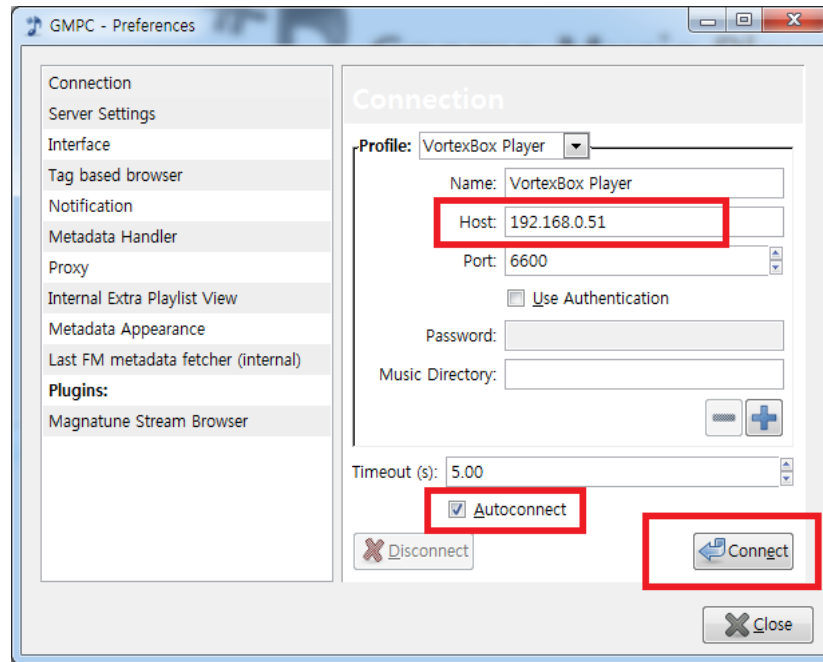
D. Program to playback DSD

i. These are programs for DSD playback of SMS-1000

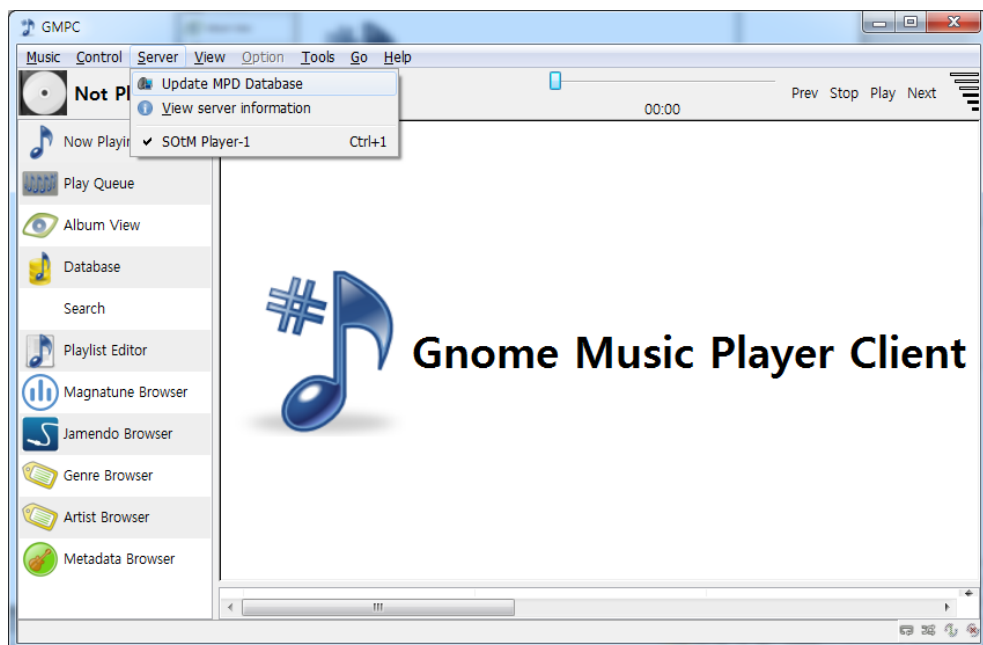
1. **GMPC** (based on PC)
 2. **MPad, MPod** (based on Apple iOS Mobile devices)
 3. **MPDroid** (based on Google Android Mobile devices)
- ii. Logitech Media Server, squeezebox, iPeng don't support to playback DSD files.
- E. The location where stored DSD files
- i. DSD files should be located in **www.vortexbox.com/files/music/wflac/** which is the default folder of GMPC or MPD(MPad, MPod, MPDroid). (We omit how to change the default folder since the process is bit complicated)
2. How to play DSD
- A. Play DSD files by GMPC
- i. Please go to 'http://gmplib.org', download and install the program.
 - ii. After the installation, please run GMPC and go to 'Music -> Preferences' and enter the content as like the below image and click 'connect' button.



- 1) If the connection is failed, please enter the iP address of your SMS-1000 to Host.
- 2) If you check 'Autoconnect', it will be connected automatically every time you run GMPC.



- iii. Once you finish this connection, please go to 'Server -> Update MPD Database' to update the sMS-1000 music files to GMPC Database.

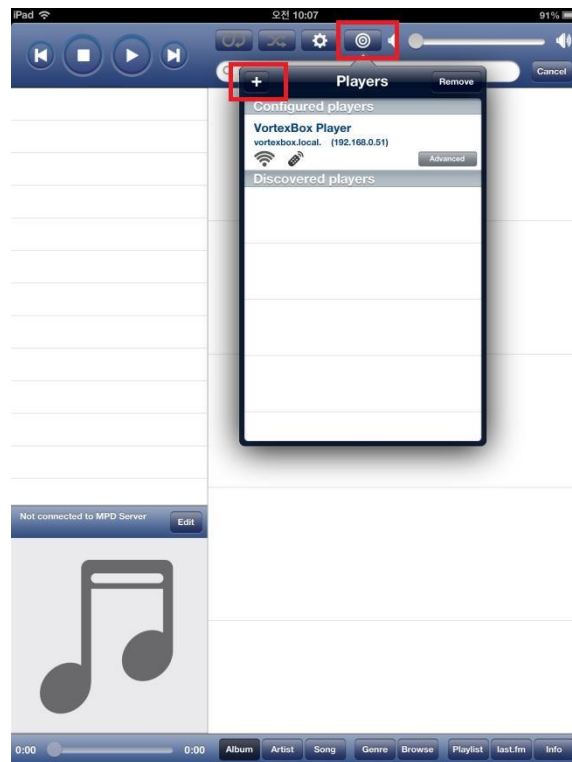


- iv. You can select and play DSD files through the Browser Menu on the left side of the page.

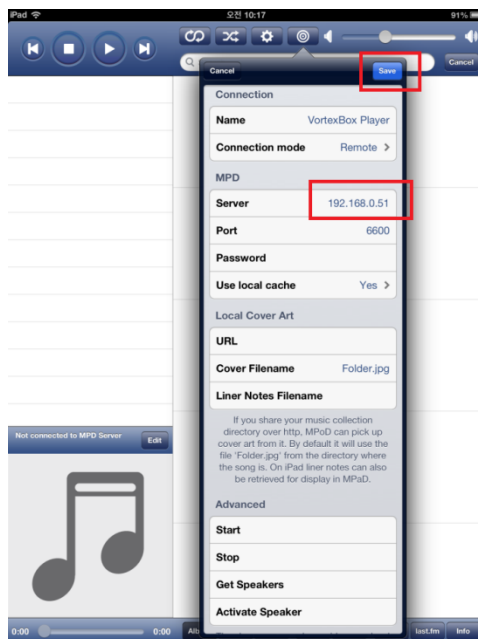
B. Play DSD files by MPad(iPad)

- i. Please install MPad on your iPad through App Store.

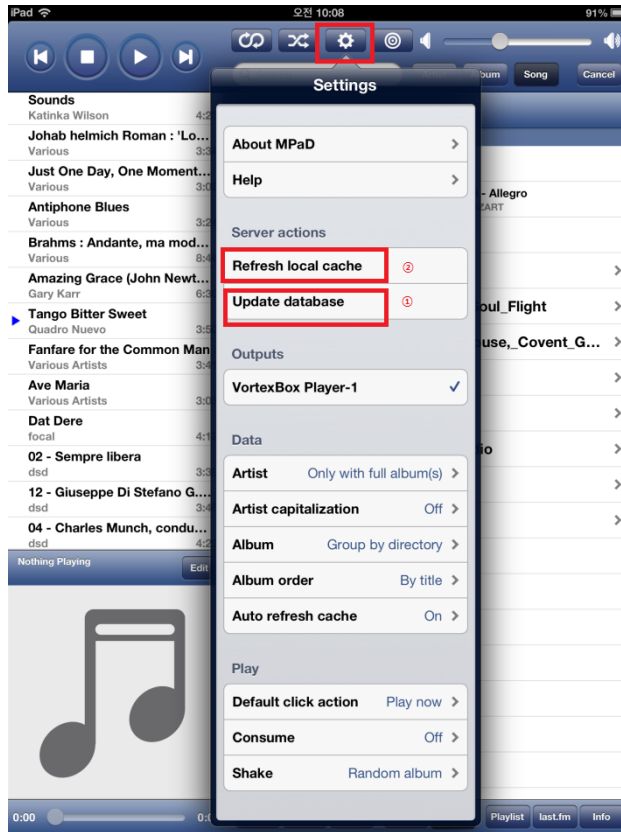
- ii. Please run MPad, and go to Players to connect SMS-1000.



- iii. As the above image, SMS-1000 will be detected automatically, but if MPaD can't detect the SMS-1000 automatically, please go to '+' button on the upper left, and input the IP address at Server and save the information.



- iv. Once SMS-1000 is connected well, go to 'Settings' and 'Update database -> Refresh local cache' in order.



- v. You can select and play DSD files once the update has done.
(Please be noted, the update takes longer depending on how many files stored on SMS-1000 or iPad features)